

BAD Cup 2021
SAILING INSTRUCTIONS
Saturday 7th August

START 13:00hrs

HW 5.1m, 15:18hrs BST @ Leith

YACHT TEAM RACING EVENT HELD BETWEEN ALL MEMBERS FROM
Burntisland SC, Aberdour BC AND Dalgety Bay SC

RULES

The race will be governed by the *rules* as defined in the Racing Rules of Sailing, the prescriptions of the RYA, the Notice of Race, these sailing instructions and the appropriate class rules. In the event of any conflict with the Notice of Race these sailing instructions shall prevail.

CONDITIONS OF ENTRY

Competitors participate in the regatta entirely at their own risk. See Rule 4, Decision to Race. The organising authority will not accept any liability for material damage or personal injury or death sustained in conjunction with or prior to, during, or after the regatta. Sailing is by its nature an unpredictable sport and therefore inherently involves an element of risk. By taking part in the event, each competitor agrees and acknowledges that (a) they are aware of the inherent element of risk involved in the sport and accept responsibility for the exposure of themselves, their crew and their boat to such inherent risk whilst part in the event; (b) they are responsible for the safety of themselves, their crew; their boat and their other property whether afloat or ashore; (c) they accept responsibility for any injury, damage or loss to the extent caused by their actions or omissions; (d) their boat is in good order, equipped to sail in the event and they are fit to participate; (e) the provision of a race management team, patrol boats and other officials and volunteers by the event organiser does not relieve them of their own responsibilities; (f) the provision of patrol boat cover is limited to such assistance, particularly in extreme weather conditions, as can be practically provided in the circumstances.

It shall be understood that every entrant in the BAD CUP shall be insured with valid third-party liability insurance with a minimum cover of £3,000,000 per incident or the equivalent.

Some of the courses include Forth Ports channel markers which define protected channels as turning marks of the course. The use of Forth Ports markers as turning marks is permitted by Forth Ports only on the condition that due care is taken by competitors to ensure that no damage is done to the markers. Any such damage will be the sole responsibility of the individual competitors who are advised to ensure that their insurance policy covers such eventualities. Notice is drawn to Forth Ports Bylaws which place certain restrictions on navigation. All competitors should be familiar with these bylaws.

Measurement or Rating Certificates

All yachts will compete under the current RYA Portsmouth Yardstick scheme (Base Rig) as amended by the current FYCA Handicap List.

Measurement

Yachts may be inspected before or after any race at the discretion of the race committee.

Eligibility

The event is open to all yachts whose owners are paid up members of ABC, BSC and DBSC.

An entry form should be completed and signed by each yacht owner or helm.

NOTICES TO COMPETITORS

Notices to competitors will be posted on the official notice board on the Burntisland Sailing Club.

CHANGES TO SAILING INSTRUCTIONS

Any changes in the sailing instructions will be posted for at least one hour before the advertised starting time of the race concerned. Changes in the sailing instructions will be indicated by displaying **flag L** (yellow and black quarters).

Late changes in the sailing instructions will be posted on a blackboard on the end of the pier. Such changes will be indicated by the flying of **flag L**.

SIGNALS MADE ASHORE

Signals made ashore will be hoisted on the flagpoles located on the bridge of Burntisland Sailing Club.

SCHEDULE OF RACES

The classes to race, designated class signals and the order and times of warning signals are as follows:

Flags

Preparatory Flag	P	white rectangle within blue rectangle
First start Yachts	E	horizontal blue (above) and red bars
Second Start	G	vertical blue and yellow stripes

▲ denotes flag raised ▼ denotes flag lowered - start of class race

Time (hrs)	Class Flag	Preparatory Flag	Sound
12:55	E ▲		Horn
12:56		P ▲	Horn
12:59		P ▼	Horn
13:00	E ▼ G ▲		Horn
13:01		P ▲	Horn
13:04		P ▼	Horn
13:05	G ▼		Horn

(in order to assist yachts that do not normally race a table describing this sequence and the flag signals is included at Appendix B)

START DEFINITIONS ~

Both starts will be sailed under 'plain sail'. No Cruising chutes or Spinnakers may be used.

First Start Yachts are for all yachts who are in their opinion more race orientated.

Second Start Yachts are for all yachts who are in their opinion cruiser orientated.

ALL CLASSES, UNLESS CUTTER RIGGED, MAY ONLY USE ONE HEADSAIL AT A TIME. THIS MAY BE POLED OUT.

START SIGNALS

Start signals will be in accordance with schedule of races. (See Appendix B)

COURSE AREA

The course area is on the Forth Estuary near Burntisland all shown on Admiralty Chart no 736.

THE COURSE

The courses to be sailed for each class will be displayed on the board displayed on BSC bridge.

COURSE A WILL BE INDICATED BY A RED BOARD SHOWING LETTER A
COURSE B WILL BE INDICATED BY A GREEN BOARD SHOWING LETTER B.

The course will be displayed as per **Appendix A** in these Sailing Instructions.

All yachts share the same course. The course will be sailed **continuously until a shortened course flag 'S' is displayed at the end of the pier**. After which time all yachts shall be finished the next time they cross the finish line. The total time sailed by each yacht will then be divided by the number of laps sailed and the resultant time will be the yachts 'elapsed time' subject to handicap adjustment.

MARKS

Course marks are as described on **Appendix A**.

STARTS

Starting Line The starting line is defined as the line extending from the flag pole located at the end of the bridge of Burntisland Sailing Club, and an outer starting line mark, an orange buoy marked 'X'. There will be a inner mark for reasons of safety to keep yachts away from the shore. Yachts must pass between the inner mark and the 'X' mark in order to start.

RECALLS

Individual recalls will be signalled by **flag X** (blue cross on a white background)

General recalls will be signalled by the **First Substitute** pennant (yellow within blue). First substitute will be lowered four minutes after the aborted start. No sound signal will be made. Subsequent starts will be as in schedule of races. Start recalled will begin their start sequence 1 minute after the first substitute is lowered.

FINISHING

This will be the same as the start line. The finishing line is defined as the line between the flagpole located on Burntisland Sailing Club Bridge and an outer finishing mark which is an orange buoy marked 'X'. If any class fails to finish within the time limit the committee will endeavour to record times at the turning mark immediately before the time limit has passed, in order to determine finishing places.

TIME LIMITS

RRS 35 shall not apply, (a) The time limit for the race will be 2 hours from the start. The race will be valid for all those yachts finishing within the time limit. (b) When the first yacht of each class finishes within the prescribed time limit, the race will be valid for those yachts which finish within ½ hour of the finishing time of the first yacht in its class. (c) When no yacht finishes within the prescribed time limit, the race will be abandoned. Abandoned races will not be re-sailed. (subject to the conditions detailed above regarding finishing)

PROTESTS

Intended protests between competitors must be communicated verbally and with the use of **flag B** (full red) at the time of the incident. Failure to display, failure to notify the protested yacht or late signal display will make the protest invalid. Details of all protests shall be written on RYA Protest Forms available from Burntisland Sailing Clubhouse and shall be lodged there within sixty minutes of the last yacht finishing, unless extended at the discretion of the Race Committee. Protests will be heard in approximate order of receipt as soon as possible.

SCORING

RRS Low Points Scoring System will apply.

Each Club: The score for each club will be based on the **lowest** number of entries from a competing club.

EXAMPLE ~

ABC enter 6 boats. BSC enter 12 boats, DBSC enter 9 boats. The lowest club entry is 6 boats, therefore each club will count their best 6 scores on completion of the race.

Club A's yachts finish the average lap course. After lap and handicap calculations they earn places: 1, 6, 9, 10, 12, 15, 16, 20, 21

The Club will score (1+6+9+10+12+15) = 53.

Club B's yachts finishing positions were: 2, 3, 4, 5, 7, 8, 19, 23, 22, 24, 25, 26, 30

That Club's score will be (2+3+4+5+7+8) = 29

The club with the lowest points score will win, the club with the next highest score will be placed second and each club thereafter placed in ascending points order. In this, example Club Two wins and Club One is placed second.

PRIZEGIVING

The BAD Trophy will be awarded to the winning club. That is to say the club with the lowest aggregate score.

The Prize giving will be held in the BSC clubhouse immediately after racing.

ALTERNATIVE PENALTIES

Should a yacht be motoring after its preparatory signal it can exonerate itself by executing two full 360 degree turns prior to crossing the start line after its starting signal has been made. These turns have to be made under sail with its motor off, and at no time whilst executing this manoeuvre can the yacht inconvenience any other yacht that is racing.

HAZARDS

Care should be taken to avoid the Kirkbush Rock located between the Lammerlaws mark and the start/finish line. This will be marked with a BSC yellow dawn buoy. BSC accepts no liability for the accuracy of this mark and a wide berth is recommended. Care should also be taken between the Sandend Mark and the Lammerlaws to avoid the shallows, however this is usually only an issue at low tides.

Appendix A

Courses

COURSE WILL BE SAILED CONTINUOUSLY UNTIL S FLAG IS DISPLAYED AT THE END OF THE PIER TO SIGNIFY THE END OF THE RACE.

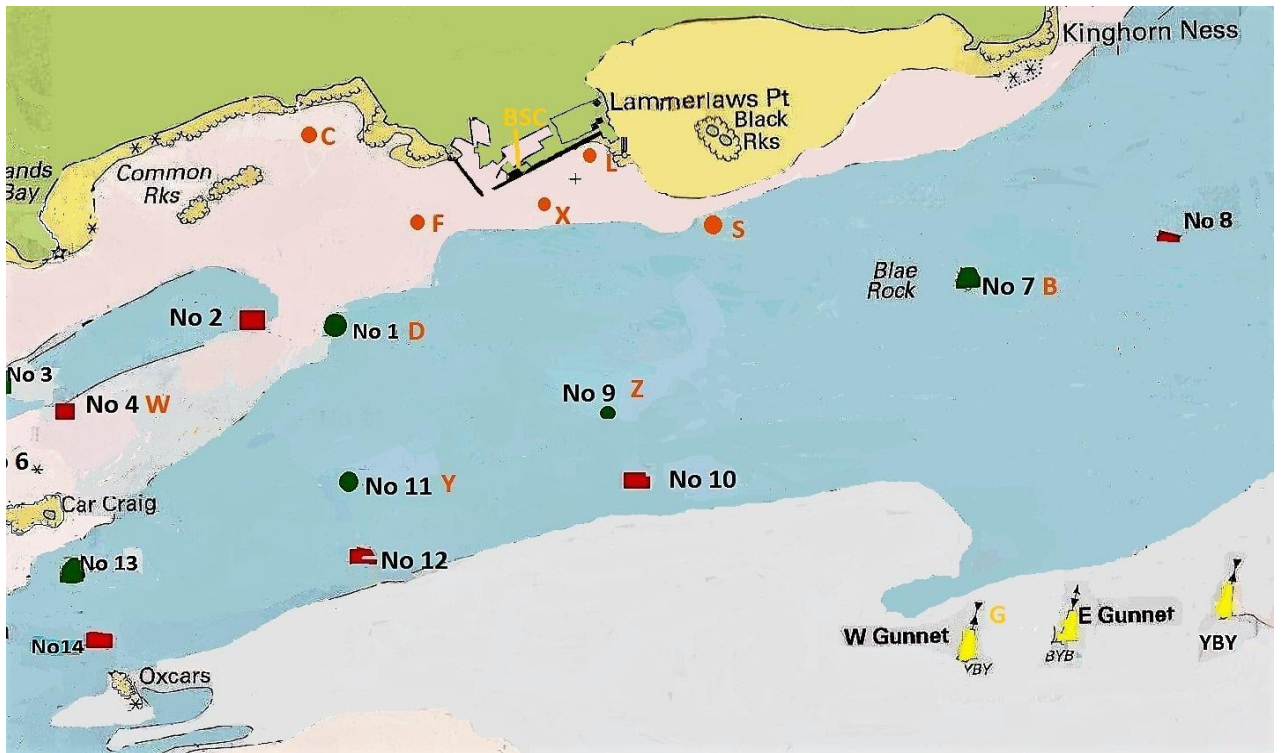
Course A = X, F, D, Y, Z, S, L, X
All marks to be left to PORT

Course B = X, L, S, Z, Y, D, F, X
All marks to be left to STARBOARD








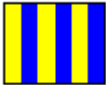
Description of Marks

X	Start mark is an ORANGE Dahn Buoy marked with an X <i>This is the outer limit buoy of the START LINE.</i>
F	Orange buoy with F printed thereon.
D	Braefoot Channel Mark M1 - Green FPA Mark
Y	Braefoot Channel Mark F11 - Green FPA Mark
Z	Braefoot Channel Mark F9 - Green FPA Mark
S	Sandend, Orange dahn buoy marked with an S
L	Lammerlaws, Orange dahn buoy marked with an L

BAD CUP COURSE CHART



Appendix B - Start Procedure

Time	First Start (Race Orientated)	Second Start (Cruiser Orientated)
1255	 E up 5 minute horn	
1256	 P up 4 minute horn	
1259	 P down 1 minute horn	
1300	 E down START (simult. with G up)	G up 5 minute horn (simult. with E down) 
1301		 P up 4 minute horn
1304		 P down 1 minute horn
1305		 G down START
Course A	X, F, D, Y, Z, S, L, X	Marks to Port
Course B	X, L, S, Z, Y, D, F, X	Marks to Starboard